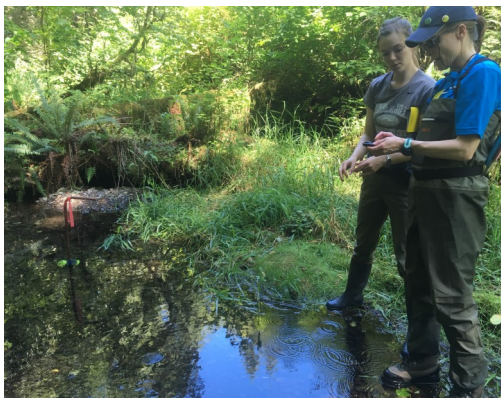


10,000 YEARS INSTITUTE

2021 Year-End Summary



RESEARCH

3 Ecological Impact Studies

- Scotch Broom
- Reed Canarygrass
- Hoh River Knotweed

Research to Fill Knowledge Gaps

Our current work addresses critical knowledge gaps regarding distribution of endemic species, invasive plants and their impacts to functional habitats, and watershed dynamics in response to climate disruptions. We are [continuing studies](#) on the impacts of invasive plants (Scotch broom and reed canarygrass) to ecosystem services and native plants in Pacific Northwest coastal riparian ecosystems, in addition to research on the distribution and status of the endemic Olympic Mudminnow. In the [Hoh River Knotweed Study](#), 10KYI's research team is analyzing field data collected between 2001 & 2021 to identify long-term management strategies for knotweed in the Pacific NW.



RESTORE

3,782	Acres Surveyed & Treated
29	Species Treated
470	Road Miles Surveyed
160	River Miles Surveyed

Local Jobs for Local Work

10KYI's Pulling Together: Jobs in Restoration Program provides training and jobs to members of the local community while preventing the spread of invasive species in coastal watersheds. The program establishes a model for a skilled, locally-based workforce providing ecological services, and engaging in community education and landowner collaboration. In 2021, we partnered with agencies, tribes, and project sponsors to support healthy habitats by integrating invasive plant prevention into all other resource management activities.

25 Full-Time Positions Filled in 2021:

- Restoration Field Technicians
- Restoration Crew Lead
- Project Coordinator

10KYI trains staff in survey methods, invasive plant identification and treatment, native plant identification and seedling transplant, plot and transect establishment, and field data collection. We employ restoration and research staff eleven months out of the year! Visit our [website](#) for position descriptions.



EDUCATE

- 11 Presentations
- 4 Field tours
- 6 Symposia & Conferences

Outreach and Education

In addition to presenting at regional workshops and field tours, in 2021 we collaborated with regional partners to initiate an accredited natural resources coursework and field study program, to be offered locally through Peninsula College, Huxley College of the Environment (WWU), Grays Harbor College. The program's goal is to develop skills to those interested in jobs in monitoring, research, restoration, and natural resources management—learning in the field with regional project managers. The program will also engage high school students on a natural resources career path with curricula from Pacific Education Institute...more to come!

10,000 Years Institute

We are a 501(c)(3) nonprofit that evaluates the effects of human activities on natural environments – the forests, rivers, wetlands and estuaries that sustain our communities and ecosystems. Through development of innovative, science-based approaches to restore ecological integrity, we promote sustainable practices in landscapes across the region.

Survey & Control Sites

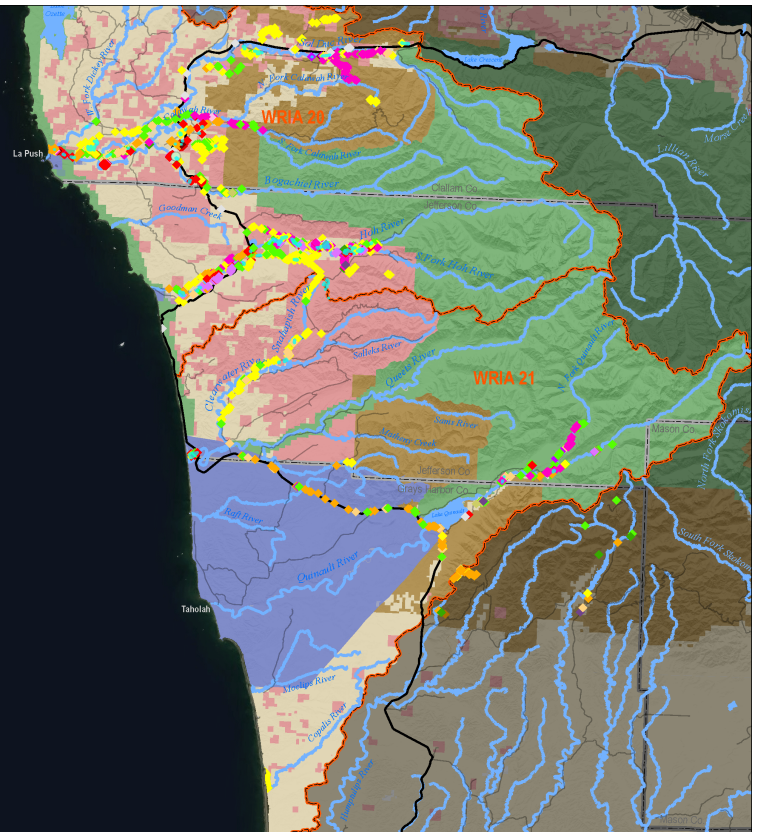
◆ Bull Thistle	28 sites / 0.99 acres
◆ Canada Thistle	255 sites / 34.53 acres
◆ Common Tansy	5 sites / 0.003 acres
◆ English Holly	19 sites / 0.029 acres
◆ Evergreen Blackberry	18 sites / 4.43 acres
◆ Everlasting Peavine	7 sites / 0.03 acres
◆ Foxglove	10 sites / 0.04 acres
◆ Hawkweed Species	3 sites / 0.06 acres
◆ Herb Robert	610 sites / 121.21 acres
◆ Himalayan Blackberry	27 sites / 4.43 acres
◆ Spotted Jewelweed	37 sites / 0.58 acres
◆ Knapweed Species	1 site / 25 sq. ft.
◆ Knotweed Species	272 sites / 1.481 acres
◆ Morning Glory	1 site / 15 sq. ft.
◆ Orange Hawkweed	1 site / 1 sq. ft.
◆ Paulownia	27 sites / 1.93 acres
◆ Queen Anne's Lace	27 sites / 1.93 acres
◆ Reed Canarygrass	470 sites / 15.12 acres
◆ Scotch Broom	946 sites / 324.87 acres
◆ St. John's-wort	88 sites / 5.148 acres
◆ Tansy Ragwort	217 sites / 42.71 acres
◆ Yellow Flag Iris	12 sites / 0.18 acres
● Yellow Archangel	1 site / 150 sq. ft.

Reference Layers

- Primary Highway
- Light-Duty Road
- WRIA Boundary
- Project_mask
- County Boundary

Administrative Agency

- National Park Service
- U.S. Forest Service
- Tribal Trust Lands
- WA Dept. of Natural Resources
- Private Individual or Company



Washington Conservation Corps

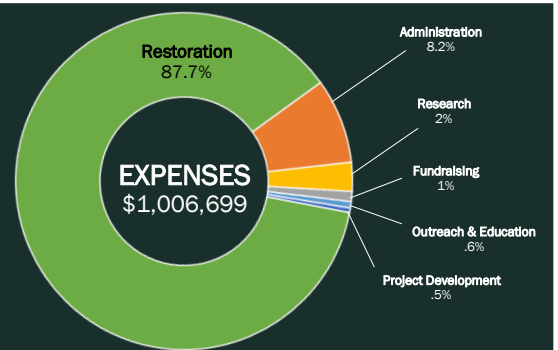
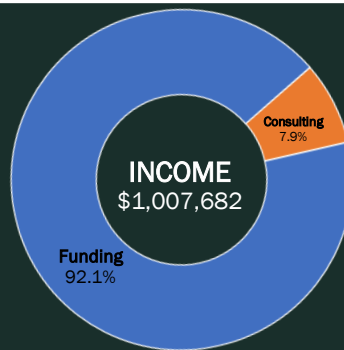


10KYI partnered with the Washington Conservation Corps (WCC) to treat invasive species on state and federal forestland and roads in the Sol Duc watershed. The crew worked 600 hours treating Scotch broom and herb Robert to support forest health, reduce wildfire risk, and allow native plants to thrive. We appreciate their hard work!

North and South Coast Crews



10KYI's South Coast Crew (Queets to Ocean Shores) surveyed and treated over 112 acres of dense Scotch broom along the Washington coast at Griffiths Priddy State Park. Below left, the North Coast Crew from the Forks area cleared over 250 acres of Scotch broom in four watersheds.



This work would not be possible without the generous support from our funders, partners, collaborators, and private landowners:

